

# Worksman Mover Industrial Tricycles Assembly Instructions and Parts List

Worksman Trading Corp - 94-15 100<sup>th</sup> Street - Ozone Park, NY 11416 - (888) 3-WHEELER or (718) 322-2000  
www.worksmancycles.com Parts list M2626-09

## Models M2626, M2626-NDB, M2626-CB, M2626-3CB

M2626 = Drum Brake Only    M2626-NDB = Coaster Brake Only    M2626-CB = Drum & Coaster Brake    M2626-3CB = Drum & 3 Speed Coaster

### The Worksman Mover - The World's Toughest Industrial Tricycle



Congratulations on the purchase of your Worksman Mover Industrial Tricycle. The Mover is considered the flagship of the Worksman Business Cycle System, which is undoubtedly the finest line of industrial cycles. These durable tricycles are used around the world by leading companies and organizations to move personnel and supplies efficiently and safely in an environmentally friendly manner.

Before assembly and riding, make certain to read this manual and any other literature provided thoroughly. Always follow the rules of safe riding. Always keep your Mover Tricycle in tip-top shape by replacing worn parts as needed with genuine Worksman Cycles parts. (Do not use generic bicycle parts.) With simple maintenance, your Worksman Mover Tricycle will perform reliably day after day, year after year.

- *This manual is intended as an assembly and maintenance guideline for a professional and qualified bicycle mechanic. Failure to have this cycle professionally assembled could result in injury or death.*

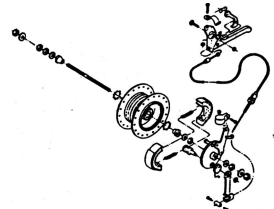
### Worksman Mover Parts List (For the entire M2626 Series)

#### Frame, Fork and Related Parts (66HD forks are used for cycles *without* front drum brakes. 60HD requires 60STR.)

<u>Part #</u>	<u>Description</u>	<u>Part #</u>	<u>Description</u>
MF2626A	Mover Frame (Specify color)	60STR	Fork Strap for Drum Brake
60HD	Fork w/ Drum Brake Tab - Black	60HD-YEL	Fork w/ Drum Brake Tab - Safety Yellow
60HD-ORG	Fork w/ Drum Brake Tab - Safety Orange	60HD-SP	Fork w/ Drum Brake Tab - Special color
66HD	Fork w/o Drum Brake Tab - Black	66HD-YEL	Fork w/o Drum Brake Tab - Safety Yel
66HD-ORG	Fork w/o Drum Brake Tab - Safety Org	66HD-SP	Fork w/o Drum Brake Tab - Special
48	Head Set Cups (pair)	49	Headset Bearings (pair)
50A	Headset Complete (48,49,52,53,54)	51	Bottom Cone (presses on Fork)
52	Top Adjusting Cone (threaded)	53	Key Washer
54	Fork Top Lock nut	55F	Handlebar-Junior High Rise
55A	Stem for Handlebar	55B	Handgrips (pair)
3927M	Rear Platform		

#### Front Drum Brake Parts (Old style hubs have loose bearings. New style hub has pressed bearings.)

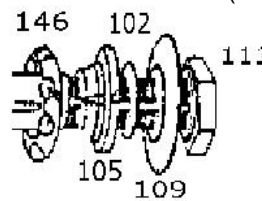
<u>Part #</u>	<u>Description</u>	<u>Part #</u>	<u>Description</u>
<u>OLD STYLE</u>			
L900	Drum Brake Hub	L709	Front Axle Set for Drum Brake
F817	Wheel Bearings - Loose 11 balls	L725	Drum Brake Plate Kit (Internal parts kit)
<u>NEW STYLE</u>			
L500-F	Hub - NEW STYLE w/ pressed bearing	L509	Axle - NEW STYLE for pressed bearing
L517	Pressed Bearing - NEW STYLE	L525	Drum Brake Plate Kit (NEW STYLE)
F719	Drum Brake Cable w/ F769 and F770	F816	Axle Washer
F769	Anchor Bolt Assembly for F719 Cable	F770	Adjusting Barrel for F719 Cable
L752R	Brake Lever (Right) w/ Parking Lock	160B	Fork Retention Clip (each)
L752L	Brake Lever (Left) w/ Parking Lock	L815	Outside Axle Nut (each)



L900 Drum Brake- Exploded View with F719 Cable



Headset



Free Side Rear Wheel . Exploded View

## **Rear Axle and Related Parts**

<b><u>Part #</u></b>	<b><u>Description</u></b>	<b><u>Part #</u></b>	<b><u>Description</u></b>
102	Key Washer	103	Cups for Free Side Hub
105	Adjusting Cone (threaded)	106	Stationary Cone (presses onto axle)
109	Dust Washer	113	Locknut - Left Hand Thread- Free Side)
146	Bearings (pair)	64M	Woodruff Key
59M	Locknut-Drive Side	132	Axle Parts Set (102,105,109,113,146,64M,59M)
M13966	Rear Axle	69	Fixed Drive Sprocket (CB, 3CB, NDB)
4129	Freewheel Sprocket . 22 tooth (M2626)	63A	Bushing for 4129 (M2626)
63B	Keyway (Fits in axle slot to attach 69 sprocket.)	63C	Set screw for 69 and 4129
M13975	Side Bearing with Plate (each)	M13974	Center Axle Support Bearing
301M	Coaster Brake w/Dual Sprockets	404NM	3 Spd Coaster Brake w/ Dual Sprockets
SS721	Coaster Brake Internal Kit (for 301M)	SS12N-1	3 Speed Cable and Trigger for 404NM

## **Crank and Crank Parts (Pedal Section) and Chains**

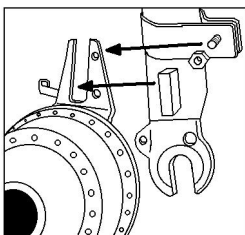
<b><u>Part #</u></b>	<b><u>Description</u></b>	<b><u>Part #</u></b>	<b><u>Description</u></b>
1265	Crank Parts (1266,1268,1269,1271,1272,1273,1274)	1265BMXS	Deluxe Sealed Crank Set (Upgrade)
1266	Crank Bearings (pair)	1267D	Complete Crank Set 36T(1265,1275,1380D)
1267F	Complete Crank Set with 32 T Sprocket	1267H	Complete Crank Set with 28 T Sprocket
1268	Cups for crank housing (pair)	1269	Stationary washer (inside)
1271	Key Washer (outside)	1271	Key Washer (outside)
1272	Adjusting Cone (threaded, outside)	1273	Stationary Cone (inside)
1274	Crank Locknut	1275	Crank (one piece, forged - 6.5+)
1380D	Sprocket 36 Tooth	1380F	Sprocket 32 Tooth
1380H	Sprocket 28 Tooth	7217	Pedal Set (Pair)
4910	Chainguard	4914A	Chain Connecting Link (1/2x3/16+)
4914S	Long Chain (CB, 3CB . 1/2x3/16x147 links)	4914XX	Chain- Short (1/2x3/16x37 links)
4914SA	Long Chain 1/2x3/16x133 links (Freewheel)	4915	Chain Adjusters (for Coaster Brake)

Note- The Mover comes standard with a 36T front sprocket and 1265 crank part set. Smaller sprockets in the front will reduce gear ratio, which makes it easier to start pedaling. The 1265BMXS is a sealed, heavier duty upgrade for crank parts.

## **Seats, Seatpost and Fenders, Baskets and Cabinets** (2005 and up models do not require 5+saddles.)

<b><u>Part #</u></b>	<b><u>Description</u></b>	<b><u>Part #</u></b>	<b><u>Description</u></b>
6910V-5	Saddle (Padded w/ 5/8+shim - Pre-2005)	6911V-5	Saddle (Padded w/ 5/8+shim, springs)
6910V	Saddle (Padded w/ 7/8+clamp - 2005 and up)	6911V	Saddle (Padded w/ 7/8+clamp, springs)
4908M	Seatpost - Solid Steel (Pre-2005)	4909M	Square Head Bolt (Secures Seatpost)
4908D	Seatpost . 1+tubular (2005 and up)	4911D	Seat Binder Clamp (2005 and up)
M13970	Basket for Rear Platform (23x23x12+)	M13E5	5+Platform Lip
M17350	Cabinet (23x22x11.5+)	M17350J	Jumbo Cabinet (23x22x18+)
7228	Front Wire Basket (21x15x9+w/ bracket)	139	Front Wire Basket (18x13x6+w/bracket)
82	Front Fender	83A	Front Fender Brace
82K	Front Fender Hardware Kit (95, 4907, 4907A)	4902	Rear Fender (L or R)
M13996	Rear Fender Brace (L or R)	95	Front 1/4+Bracket (fender to fork)
4907	Bolts, nut, washer (for 83A Brace)	4905	Bolt set to attach (4902 to M13996)
4907A	Bolt Set to attach 82 to fork	MSF26	Complete Side Fender Kit w/ braces

Note- Movers come with a front fender as standard equipment. The side fender set maybe added as an option by ordering Part # MSF26. Baskets and Cabinets are optional.



Drum Brake Fork Assembly



Seat



Rear Steel Basket



Rear 11+Steel Cabinet

## **Wheels, Tires, and Fenders** (All wheels and wheel parts shown below are for 26+ wheels ONLY.)

**ADD "KVPR" TO ANY WHEEL w/o TIRE TO GET KEVLAR TIRES AND PUNCTURE RESISTANT TUBES INSTALLED!**

<b>Part #</b>	<b>Description</b>	<b>Part #</b>	<b>Description</b>
77A	Front Wheel w/ Drum Brake	4131QA	Front Wheel w/o Drum Brake
77	Front Wheel w/ Drum Brake w/Air Tire	4131Q	Front Wheel w/o Drum Brake w/Air Tire
77S	Front Wheel w/ Drum Brake w/Solid Tire	4131QS	Front Wheel w/o Drum Brake w/Solid Tire
78SA	Free Side Wheel (left)	M14031	Drive Side Wheel (right)
1007	Free Side Wheel (left) with Air Tire	M14032	Drive Side Wheel (right) w/ Air Tire
78S	Free Side Wheel (left) with Solid Tire	M14032S	Drive Side Wheel (right) w/Solid Tire
9178SA	Free Side Mag Welded Wheel	9179MSA	Drive Side Mag Welded
9178	Free Side Mag Welded Wheel w/ Air tire	9179M	Drive Side Mag Welded w/ Air tire
9178S	Free Side Mag Welded Wheel w/ Solid tire	9179MS	Drive Side Mag Welded w/ Solid tire
4922A	Tire - 26x2.125+WTC Sup-r-Tire (standard)	4923A	Tube - 26x2.125+(standard)
4922AKV	Tire - 26x2.125+WTC KEVLAR Sup-r-Tire	6023A	Tube - 26x2.125+Puncture Resistant
4922AWSW	Tire - 26x2.125+Sup-r-Tire (White Wall)	4939	Solid Rubber Nev-R-Fail Tire - 26+
1017	Rim Strip	101	Hub for Free Wheel w/ Cups
3980M	Hub for Drive Side Wheel	1016	Rim Only (no spokes - outer rim only)
1014A	Spoke (Rear & Front w/o Drum, 11G, 10 9/16+)	1014B	Spoke (Front Drum Wheel, 11G, 9 9/16+)

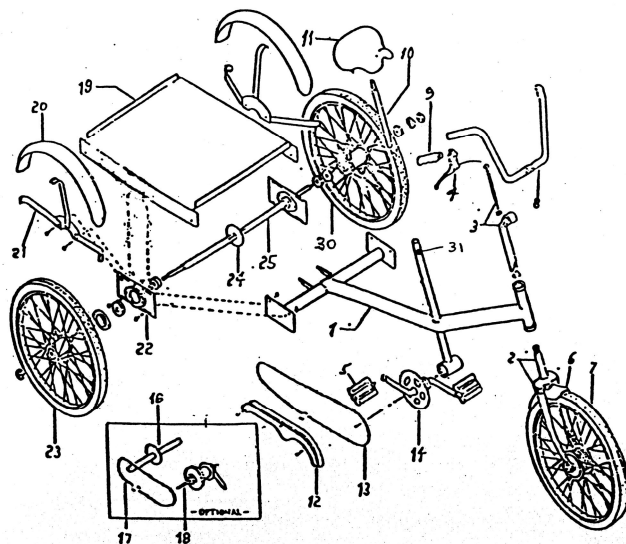
Note- Worksmen Mover Tricycles come standard with WTC Clincher Wheels w/ 11 gauge spokes. They are very durable. The Welded Mag Style Wheels are available only for the rear wheels. Kevlar Tires are belted air tires - ideal for preventing flats. Nev-R-Fail solid tires are solid rubber - no flats!

## **Safety and Comfort Accessories**

<b>Part #</b>	<b>Description</b>	<b>Part #</b>	<b>Description</b>
3979	Ding Dong Chime Bell	303	Squeeze Bulb Horn
3973	Mega-Horn- Battery Operated- LOUD	201	Cable and Lock set
4963	Rear View Mirror	5030T	Reflector Set with Mounting Hardware
3978	Safety Flag on Pole	P19	Bicycle Helmet
P101710	Flashing Strobe Light (Clear Lens)	P101714	Flashing Strobe Light (Red Lens)
7217-41197	Pedals with Velcro Foot Straps (Pair)	3975	Generator Light Set
1006	Air Pump for Tire Inflation (Manual)	1000	Spoke Tightening Tool
2000	Chain Rivet Remover Tool	1265TW	Crank Cone Wrench
1001	Pedal Wrench		

## **Key Component Exploded View of M2626 Series**

<b>Key #</b>	<b>Part #</b>	<b>Description</b>
1	MF2626A	Frame
2	50HD	Fork
3	55A	Stem for Handlebar
4	L752L / L752R	Brake Hand Lever
5	7217	Pedal Set
6	82 / 83A	Front Fender/ Front Brace
7	77A (w/o tire)	Front Wheel w/Drum Brake
8	55F	Handlebar
9	55B	Hand Grips (pair)
10	4908M or D	Seatpost - See seat section.
11	6910V-5	Seat - See seat section for part #.
12	4910	Chainguard
13	4914T / 4914S	Chain (M2626 / M2626-CB)
14	1267D	Sprocket & Crank Set 36T
15-16	69 or 4129	Fixed Drive or Freewheel Sprocket
17	4914XX	Short Chain
18	301M or 404NM	Coaster Brake / 3 Speed Coaster
19	3927M	Rear Platform
20	4902	Side Fender
22	M13975	Outer bearing for axle w/plate
24	69	Fixed Drive Sprocket for Rear Axle
26	M13970	Steel Basket for Rear Platform
28	132	Rear Axle Parts Set (Partial Image)
30	78SA (w/o tire)	Wheel- Free Side (Left)



21	M13996	Brace for Side Fender
23	M14031 (w/o tire)	Wheel-Drive Side (Right)
25	M13966	Rear Axle
27	M17350	12+Rear Cabinet (18+Cabinet . M17350J)
29	L900	Drum Brake- Exploded View
31	4909M	Bolt- Square Head for Seatpost (Pre-2005)

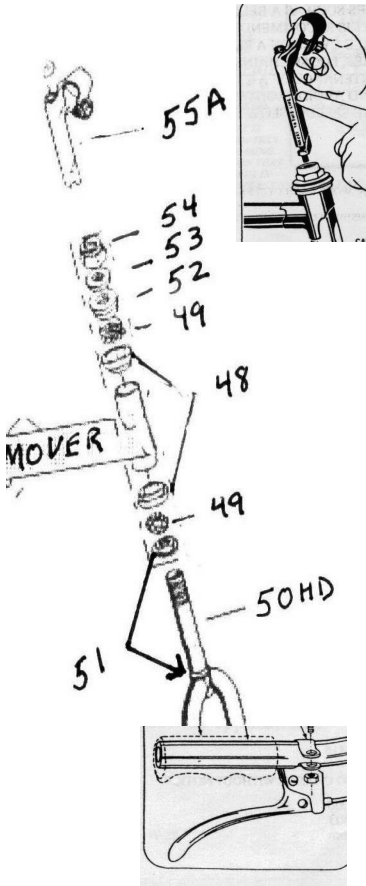
## **ASSEMBLY INSTRUCTIONS FOR THE WORKSMAN MOVER™ INDUSTRIAL TRICYCLE:** *Parts list M2626-09*

Your Worksmen Mover™ Industrial Tricycle has been hand made by American Craftspeople at our Ozone Park, New York City factory. We take great pride in each and every Worksmen Business Cycle that we manufacture and appreciate your support. Please read this manual carefully prior to performing the simple finishing assembly and prior to riding. Keep these instructions as our parts list is contained within this document which you will need for future reference.

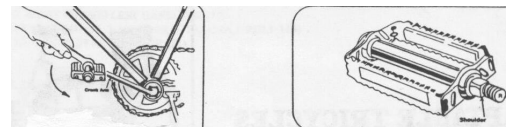
Carefully remove the tricycle from the carton. You will notice the tricycle is mostly pre-assembled at the factory. Some finishing assembly is required.

The front wheel and the fork assembly is pre-assembled at the factory.

### **TO ATTACH FRONT FORK/WHEEL ASSEMBLY TO THE FRAME:**



- 1) Grease cups (48) with Rustolene 200 lubricant or equal. Bearings (49) are pre-greased at the factory, but it is always a good idea to add lubrication prior to assembly.
- 2) Place one bearing (#49) onto the fork steering tube with the balls facing up.
- 3) Slide the threaded fork (50HD) steering tube into the frame head.
- 4) Place the other bearing on the top of the fork tube with the balls facing down towards the cup (#48), which is already pressed onto the frame.
- 5) Install the top adjusting cone (#52) onto the treaded fork steering tube. Hand-tighten, making certain the bearings do not bind. After hand tightening, turn back ¼ turn.
- 6) Install the fork key washer (#53) and reflector bracket (if reflectors were ordered) on top of the adjusting cone with tip of washer in slot on steering tube.
- 7) Install head lock nut (#54) and securely tighten. Make sure that the fork rotates freely without being loose. Excess play or resistance must be adjusted. Failure to adjust properly can lead to improper steering response.
- 8) Install handlebar stem (55A) into the fork steering tube with the handlebar clamp facing forward. The stem must be inserted far enough to reach the minimum insertion line. Tighten the stem bolt slightly at this point. Loosen the handlebar clamp nut and slide the handlebar through the clamp centering the knurled center section of the handlebar into the clamp. Position the handlebar to the desired angle and tighten clamp securely. Recommended torque is 300 IN. LBS. Adjust the handlebar rotation so that it is perpendicular to the front wheel when it is perfectly straight. Tighten stem bolt securely. Recommended torque 240 IN. LBS. Be sure not to over tighten as damage to the parts may occur causing steering failure.
- 9) Attach brake hand lever to the handlebar (either left or right depending upon the rider's preference) Make sure brake cable is not tangled in anyway.



### **INSTALLING PEDALS:**

Pedals are marked on the shaft with either an "L" or "R" denoting left or right. The "R" pedal fits on the right (sprocket side) of the crank arm. Tighten clockwise. The "L" pedal fits on the left side of the crank arm. Tighten counter-clockwise (left-hand thread). Securely tighten. Recommended torque 275 IN. LBS. **CAUTION:** *Tightening in the wrong direction will damage the crank and pedal threads.*

### **SEAT ADJUSTMENTS:**

Although the seat is already installed at the factory, adjust the height to your desired level by loosening the seat clamp bolt at the top of the frame's seat tube. Re-tighten at desired height. Make sure a minimum of 3 1/2" of the post remains in the frame tube. Never adjust post above this level. Adjust angle of seat with nose raised slightly. Tighten seat clamp securely. (240 IN. LBS.)

### **REAR FENDERS:**

Attach fender braces to fender, and fender braces to mounting bracket on frame using the provided nuts, bolts, and washers. Be sure to install the smaller fender brace in the middle. Bend braces slightly if tire is rubbing the brace.

## MAINTENANCE TIPS:

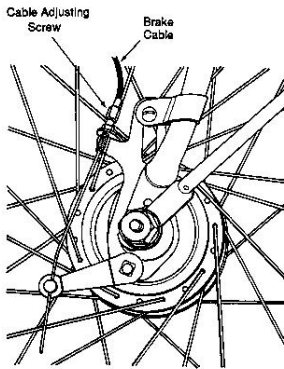
Always inspect your Worksman Cycle to ensure that all nuts, bolts, screws and hardware are tight and that no parts are worn or damaged. Do not attempt to straighten bent forks or frames.

### *Chain:*

Lubricate chain once a month or as needed with light oil.  
Replace sprockets when teeth become worn, bent or broken.  
Keep chain adjusted so there is no more than 3/8" slack. Note that we make the chains tight at the factory, as we do know they will stretch during the break-in period.



Lubricate crank parts every six months. Replace pedals when the surface is worn or if axle becomes tight or frozen.



### *Drum Brake:*

Your Worksman Mover Tricycle may be equipped with an automotive type front drum brake. This brake is ideal for slowing your vehicle smoothly and reliably. It is engaged by squeezing the hand lever on the handlebar. To use Park+ feature, when cycle is completely stopped, squeeze hand lever and push in parking plunger button on lever. To disengage, simply squeeze lever until parking plunger button releases.

Drum brakes are pre-adjusted at the factory. Readjust the cable tension as necessary using the adjusting barrel so that wheel spins freely and stops when brake is applied. Always replace worn brake cables (F719) and damaged hand levers. Internal parts kits are available for your drum brake. (See parts list for part #s.)

### *Coaster Brake (if applicable):*

Foot activated coaster brakes are easy to use and reliable. To activate this internal brake, reverse the pedaling motion until the brake engages. To avoid skidding and maintain control, apply care when braking. This is especially true on wet surfaces. Apply brakes gently, gradually increasing pressure. Replace coaster brakes when they become worn. Check chain tension regularly. Coaster brake hubs may make a vibrating noise under braking until they are broken in. For three speed units, pause pedaling to help mesh gears. (Let the cycle coast.) This will make shifts smoother and will reduce wear and tear on the hub. Do not shift when pedals are not moving as damage could occur.

### *Tires:*

Always check for worn or damaged tires. We recommend 40PSI as proper level of inflation. Replace tires that are worn or cut immediately. Replace or repair tubes that show leaks.